

**Lebanon Court**  
**\*\*Richmond Road**  
**Twickenham**  
**TW1 3DA**

£425,000

**ChaseBuchanan**





# Richmond Road TW1

Approx. Gross Internal Floor Area  
48.7 Sq M - 525 Sq Ft

ChaseBuchanan

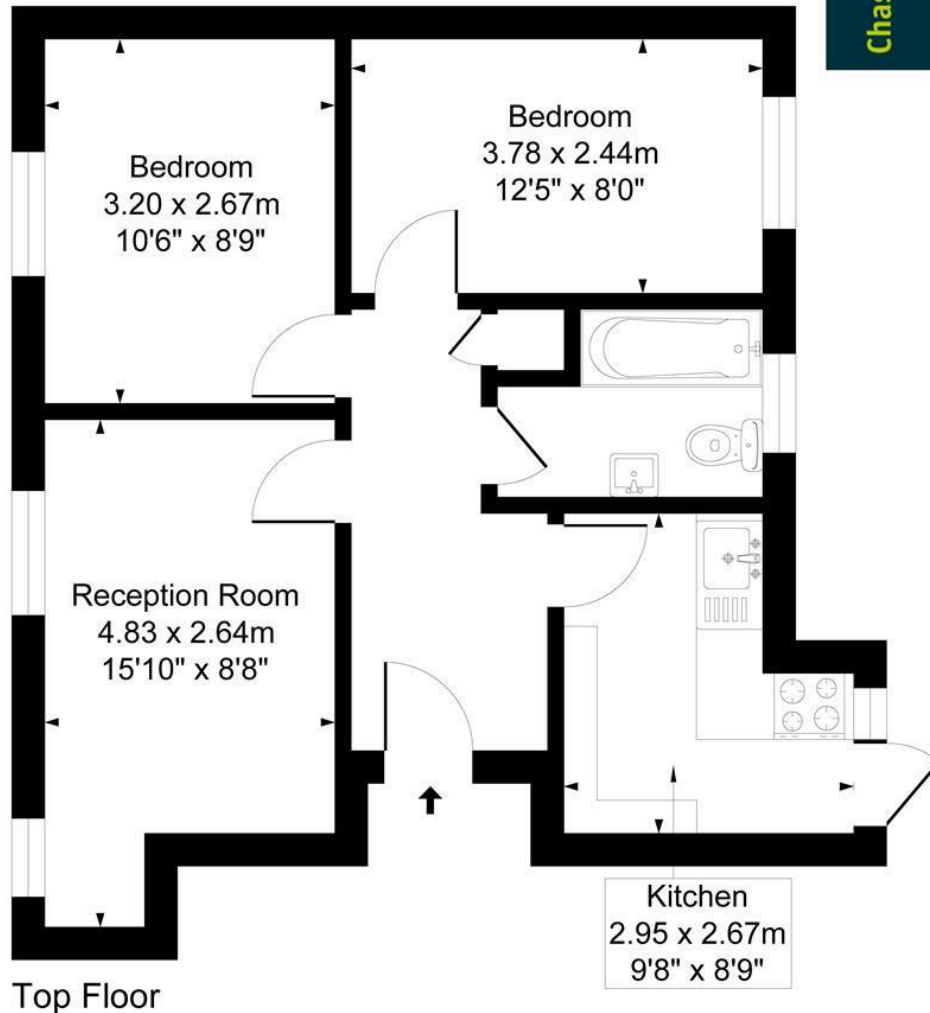
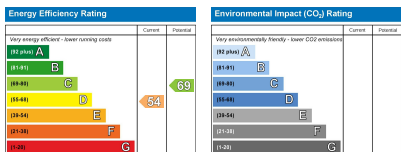


Illustration for identification purposes only, measurements are approximate, not to scale.



Care has been taken in the preparation of these particulars, however, their accuracy is not guaranteed and they do not form part of any contract. Measurements stated must be considered maximum.

- Viewings accompanied by Chase Buchanan
- Chain-free
- Two double bedrooms
- Residents parking
- Easy access to the station & shops
- Top floor apartment
- Modern kitchen & bathroom
- Communal garden. Riverside close by
- Excellent schools nearby
- Very well presented

This top-floor apartment within this sought-after mansion building is ideally located for the high street and station, whilst the delights of Church Street, Marble Hill Park and the riverside, are just around the corner.

Very well presented with a pleasing neutral décor, providing a good size living/dining room, a modern kitchen with plenty of storage, two double bedrooms and a smart bathroom.

Further benefits include communal heating and hot water included, a lift and on-site porter, residents' parking, and gardens.

There are good transport links in the area, with Twickenham & St Margarets stations a short walk away and regular buses into Richmond (District line tube) and Kingston. And a short drive to the M3, with good access to the M25/M4. The local area is well served by schools, both private and state-run, including Orleans School rated 'outstanding' by Ofsted.

To arrange a viewing please contact the vendors' sole agent Chase Buchanan.

For more information or to book a viewing, please contact:

020 8744 0101

**ChaseBuchanan**

4 York Street, Twickenham, TW1 3LD